

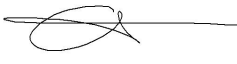
REVIEWED








By Sarah Collins at 9:22 am, Jan 27, 2023

1/23/2023

Worklist: 6222

<u>LAB_CASE</u>	<u>ITEM</u>	<u>ITEM_TYPE</u>	<u>DESCRIPTION</u>	
C2022-2701	2	BCK	AM 25/AM 26 Blood MultiDrug/THC Screen by LC-QQQ	
C2022-2708	1	BCK	AM 25/AM 26 Blood MultiDrug/THC Screen by LC-QQQ	
C2022-2710	1	BCK	AM 25/AM 26 Blood MultiDrug/THC Screen by LC-QQQ	
C2022-2729	1	BCK	AM 25/AM 26 Blood MultiDrug/THC Screen by LC-QQQ	
C2022-2773	1	BCK	AM 25/AM 26 Blood MultiDrug/THC Screen by LC-QQQ	
C2022-2776	4	BCK	AM 25/AM 26 Blood MultiDrug/THC Screen by LC-QQQ	
C2022-2780	1	BCK	AM 25/AM 26 Blood MultiDrug/THC Screen by LC-QQQ	
C2022-2791	1	UCK	AM 25/AM 26 Urine MultiDrug/THC Screen by LC-QQQ	
C2022-2792	1	BCK	AM 25/AM 26 Blood MultiDrug/THC Screen by LC-QQQ	
C2022-2814	1	BCK	AM 25/AM 26 Blood MultiDrug/THC Screen by LC-QQQ	
C2022-2816	2	BCK	AM 25/AM 26 Blood MultiDrug/THC Screen by LC-QQQ	
C2022-2817	1	BCK	AM 25/AM 26 Blood MultiDrug/THC Screen by LC-QQQ	
C2022-2818	1	BCK	AM 25/AM 26 Blood MultiDrug/THC Screen by LC-QQQ	
C2022-2842	1	BCK	AM 25/AM 26 Blood MultiDrug/THC Screen by LC-QQQ	
C2022-2847	1	BCK	AM 25/AM 26 Blood MultiDrug/THC Screen by LC-QQQ	
C2022-2900	1	BCK	AM 25/AM 26 Blood MultiDrug/THC Screen by LC-QQQ	
C2022-2903	1	UCK	AM 25/AM 26 Urine MultiDrug/THC Screen by LC-QQQ	
C2022-2908	1	BCK	AM 25/AM 26 Blood MultiDrug/THC Screen by LC-QQQ	
C2023-0011	1	BCK	AM 25/AM 26 Blood MultiDrug/THC Screen by LC-QQQ	
C2023-0046	1	BCK	AM 25/AM 26 Blood MultiDrug/THC Screen by LC-QQQ	
C2023-0058	1	BCK	AM 25/AM 26 Blood MultiDrug/THC Screen by LC-QQQ	



<u>LAB CASE</u>	<u>ITEM</u>	<u>ITEM TYPE</u>	<u>DESCRIPTION</u>	
C2023-0063	1	BCK	AM 25/AM 26 Blood MultiDrug/THC Screen by LC-QQQ	
C2023-0089	1	BCK	AM 25/AM 26 Blood MultiDrug/THC Screen by LC-QQQ	
C2023-0099	1	UCK	AM 25/AM 26 Urine MultiDrug/THC Screen by LC-QQQ	
C2023-0108	1	BCK	AM 25/AM 26 Blood MultiDrug/THC Screen by LC-QQQ	
C2023-0116	1	BCK	AM 25/AM 26 Blood MultiDrug/THC Screen by LC-QQQ	
C2023-0118	1	BCK	AM 25/AM 26 Blood MultiDrug/THC Screen by LC-QQQ	
C2023-0130	1	BCK	AM 25/AM 26 Blood MultiDrug/THC Screen by LC-QQQ	

c2022-2701-1 was also run with this batch.

AM# 25: Multi-Drug Screen in Blood and Urine by LC-MS/MS

Extraction Date: 1/20/23 Analyst: Anne Nord
Plate lot#: 220805 Plate retest date: 02/05/23

Mobile phase A: 10mM Ammonium Formate **Mobile phase B:** 0.1% Formic Acid in MeOH
0.5M Ammonium Hydroxide Ethyl Acetate LC 20% Methanol
Blank Blood Lot: 22B52016-1 **Blank Urine lot:** 12522 **Column:** Agilent Phenyl Hexyl (4.6x50mm, 2.7um)
LCMS-QQQ ID: 69679

Pre-Analytic:

- 1. Check levels of mobile phases and needle wash refill as needed. Ensure waste is not full.
- 2. Ensure correct column is installed and begin mobile phase flow allow to equilibrate ~ 30 minutes.


Analytic:

- 1. Remove standards, plate, controls, and samples from cold storage. Allow to reach room temperature.
- 2. Urine hydrolysis pipette: 250 ul urine in blank well, add 40 ul BG Turbo, add 100 ul 500 mm sodium phosphate buffer mix for at least five minutes ambient temperature.
Pipette 250 µL blood (calibrated pipette) or 250 ul urine in wells of analytical (standards) plate. **Pipette ID: 390993**
- 3. Pipette 250 µL of 0.5 M ammonium hydroxide in wells of analytical plate.
- 4. Place on shaking incubator at ambient temp., 900 rpm for 15 minutes.
- 5. Transfer 300 µL of blood or urine+base mixture to corresponding wells of SLE+ plate.
- 6. Apply positive pressure for approx. 10-15 seconds (or until no liquid remains on top of sorbent).
(Load at 85-100 PSI- Selector to the right) Manifold ID: 66792
- 7. Wait 5 minutes.
- 8. Add 900 µL ethyl acetate.
- 9. Wait 5 minutes.
- 10. Apply positive pressure for approx. 10-15 seconds. *(12-15 PSI- Selector to the left).*
- 11. Add 900 µL ethyl acetate.
- 12. Wait 5 minutes.
- 13. Apply positive pressure for approx. 10-15 seconds. *(12-15 PSI- Selector to the left).*
- 14. Remove plate containing eluate. add 50 ul 1% HCl in MeOH Place on SPE Dry and evaporate to dryness at approx. 35°C.
SPE Dry ID: 66819
- 15. Reconstitute in 100 µL 20% LC MeOH in LC Water and heat seal plate with foil. Place in autosampler and run worklist.

Post-Analytic

- 1. Open quantitation software and create a new quantitation batch.
- 2. Make necessary changes to integration limits
- 3. Evaluate samples, S/N of primary transition >5 and S/N of secondary transition >3 or evaluation of peak symmetry and resolution. Within +/- 2% or 0.1 min RT of administrative control. Calculated concentration 5 or greater or 2-5 for discretionary range.
- 4. Did all QCs pass for each analyte? (If no is it described in comments?)
- 5. Central File Packet to include: LIMS Worklist, Method Checklist, Calibration and Control Reports

COMMENTS:



Toxicology AM method 25/28 urine external control prep

working solution 10000 ng/ml in meoh diphendyramine, methamphetamine, alprazolam, , morphine
Stock solution 1mg/ml 50 ul each in 4800 ul MeOH (VWR 21050767)

ppd 7/7/22: Exp: 7/7/23 lot 7722 by AMN

Drug	lot	expiration
Methamphetamine	FE03132001	7/1/2025
alprazolam	FE06102008	6/1/2025
Diphendyramine	FN02212011	3/1/2025
Morphine	FE03232010	4/1/2025

AM 25/28 control 500 ul working solution (7722) in 4500 ul negative urine (1000ng/mL Expected concentration)

ppd 7/7/22, exp 7/7/23 lot u7722 negative urine 21522 by AMN

AM 25/28 Blood Control: 50ul working solution (7722) in 4950 ul neg blood (100ng/mL Expected concentration)

ppp 7/7/22, exp 7/7/23 lot b7722 neg blood 22B52016-3 by AMN

	1	2	3	4	5	6	7	8	9	10	11	12
A						2773-1	2842-1	c2023-0089-1			2791-1	
B						2776-4	2847-1	c2023-0108-1			2903-1	
C					negative blood	2780-1	2900-1	c2023-0116-1				
D					2701-1	2792-1	2908-1	c2023-0118-1			c2023-0099-1	
E					2701-2	2814-1	c2023-0011-1	c2023-0130-1			postive control urine	
F					2708-1	2816-2	c2023-0046-1				negative urine	
G					2710-1	2817-1	c2023-0058-1					
H					2729-1	2818-1	c2023-0063-1					Cal 1

C2022-____-_-

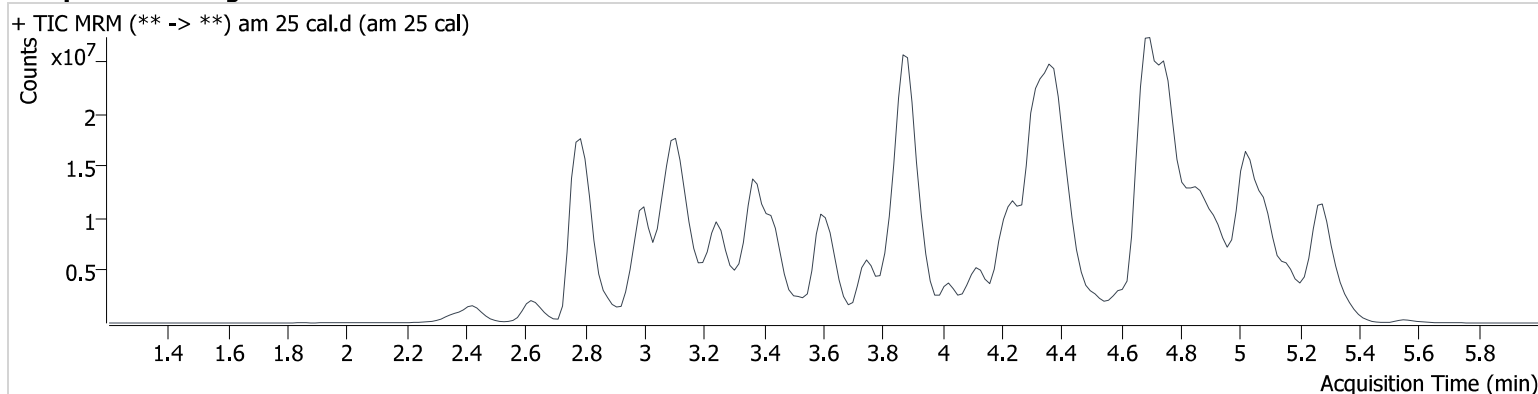
plate position 2

AM #25 Multi-Drug Screen Results

Batch results D:\MassHunter\Data\2023\am 25-26\012023\QuantResults\mds.batch.bin
Calibration Last Update 1/25/2023 3:11:54 PM

Instrument	69679	Data File	am 25 cal.d
Type	Cal	Sample	am 25 cal
Acq. Method	mds713.m	Operator	Anne Nord
Sample Position	P2-H12	Comment	
Injection Volume	2.5		
Acq. Date-Time	1/20/2023 3:29:03 PM		

Sample Chromatogram



Name	RT	Resp.	S/N	S/N	ISTD Resp.	Calc. Conc.
10-OH-Carbamazepine	3.877	3710116	2073.0	82.5	6449221	10.000
6-MAM	3.209	116401	1181.0	38622.2	2605480	10.000
7-aminoclonazepam	3.643	1932617	684.8	865.9	9848635	10.000
7-aminoflunitrazepam	3.858	3070172	405.3	865.1	9848635	10.000
9-Hydroxyrisperidone	4.418	12358328	15399.9	39483.8	9848635	10.000
Acetyl Fentanyl	4.516	754344	159.9	94014.4	30379863	10.000
Acetyl Norfentanyl	2.945	96563	342.5	182.4	30379863	10.000
a-hydroxyalprazolam	4.715	222041	115.6	14.2	9848635	10.000
alpha-hydroxymidazolam	4.775	929690	65.7	42.5	9848635	10.000
alpha-PHP	4.216	5266354	1319.9	718.5	13766180	10.000
alpha-PVP	3.895	7296660	744.2	958.3	13766180	10.000
Alprazolam	4.794	1702700	252.1	70.7	6449221	10.000
Amitriptyline	4.920	3553836	323.3	475.7	15252822	10.000
Amphetamine	3.010	6243322	4807.1	6078.0	13766180	10.000
Benzoylcegonine	3.474	327308	3983.8	67.8	530912	10.000
Brompheniramine	4.393	271985	182.9	71.4	70083920	10.000
Buprenorphine	5.561	40867	10928.8	430.0	1032651	10.000
Bupropion	4.263	5342568	743.8	1552.6	23970153	10.000
Carbamazepine	4.371	6416496	4384.6	1673.3	143617	10.000
Carisoprodol	4.307	1380071	476938.6	477.3	5551915	10.000
Chlordiazepoxide	4.980	808885	251.6	112.9	13685484	10.000
Chlorpheniramine	4.259	13632381	44833.9	198.4	12693664	10.000
Chlorpromazine	5.297	2826922	276974.4	1754.5	13657084	10.000
Citalopram	4.407	4077013	2134.0	136.7	12693664	10.000
Clomipramine	5.251	3958982	10850.7	1429.7	12693664	10.000
Clonazepam	4.655	765371	202.8	167.7	13685484	10.000
Clonazolam	4.528	512260	31.5	44599.1	13685484	10.000
clozapine	5.035	12880685	3421233.9	2402353.4	45867311	10.000
Cocaethylene	4.101	8027214	721.2	959.6	47682328	10.000
Cocaine	3.902	10988647	866.3	591.7	47682328	10.000
Codeine	3.151	783397	1879.5	1327.4	11605336	10.000
Cyclobenzaprine	4.783	6052436	681.4	∞	15252822	10.000
Desipramine	4.707	8588633	6523.2	1810.5	15252822	10.000

AM #25 Multi-Drug Screen Results

Name	RT	Resp.	S/N	S/N	ISTD Resp.	Calc. Conc.
Dextromethorphan	4.383	3274439	1243.9	1559.5	14191097	10.000
Dextrorphan	3.539	4417788	16079.3	670.3	14191097	10.000
Diazepam	5.072	1864209	2259.6	1132.9	13685484	10.000
Dihydrocodeine	2.877	2447916	682.2	2400.0	70083920	10.000
Dimethyltryptamine	3.115	3725154	546.5	1009.0	35130593	10.000
Diphenhydramine	4.338	12983715	11843.2	2964.3	70083920	10.000
Doxepin	4.582	3342188	807.6	173.4	26608263	10.000
Doxylamine	3.844	20573776	313.3	18005.4	8057288	10.000
Duloxetine	4.643	148832	42440.9	691.3	10088821	10.000
EDDP	4.305	3459814	401.6	317.2	5337189	10.000
Estazolam	4.704	4967149	2320.5	1981.4	13685484	10.000
Etizolam	4.790	305909	72567.3	754.2	13685484	10.000
Fentanyl	4.760	633232	255.3	135513.5	30379863	10.000
Flualprazolam	4.623	463461	75462.9	634.4	13685484	10.000
Flunitrazepam	4.763	1608592	239.9	228.7	13685484	10.000
Fluorofentanyl	4.820	596917	199702.9	584.9	30379863	10.000
Fluoxetine	4.610	5119644	1712669.1	113251.2	10088821	10.000
Flurazepam	4.803	7097478	1164256.6	293.4	13685484	10.000
Hydrocodone	3.411	2395738	510.0	482.4	11605336	10.000
Hydromorphone	2.637	2661805	436.5	322.3	11605336	10.000
hydroxyzine	5.170	9310025	428.4	830075.0	14191097	10.000
Imipramine	4.844	11849567	214460.1	∞	15252822	10.000
Ketamine	4.248	5387678	1002.5	104.5	14191097	10.000
Lamotrigine	3.754	463657	470.3	1975.1	12693664	10.000
Levamisole	3.328	4695532	6691.2	470.3	14191097	10.000
Levetiracetam	2.628	1870687	3598.0	2186.3	12693664	10.000
Lorazepam	4.609	331398	3426563789992	∞	13685484	10.000
			4.2			
Maprotiline	4.721	1136632	1387.8	267.2	15252822	10.000
MDA	3.145	4224354	2130.9	322.4	35130593	10.000
MDEA	3.389	7658033	499.4	614.4	35130593	10.000
MDMA	3.221	8798183	723.3	3315.0	35130593	10.000
Meperidine	3.908	3781310	3382.3	1354.4	14191097	10.000
Meprobamate	3.742	973654	1895.7	180.5	5551915	10.000
Methadone	4.687	9915547	3171.1	1014.7	5337189	10.000
Methamphetamine	3.116	12189599	∞	∞	35130593	10.000
Methocarbamol	3.694	502261	190.6	224.4	70083920	10.000
Methylphenidate	3.756	14525545	4623.7	11866.6	14191097	10.000
Metoprolol	3.584	1291279	2751.5	4893.2	14191097	10.000
Midazolam	4.944	407143	118453.9	974.1	13685484	10.000
Mirtazapine	4.770	6717534	1643.2	5009.6	14191097	10.000
Mitragynine	4.833	879115	205801.6	255098.2	14191097	10.000
Morphine	2.441	680218	∞	452.8	529098	10.000
Norbuprenorphine	4.035	133899	3382.7	35771.5	1032651	10.000
Nordiazepam	4.921	1120117	377627.2	546.8	13685484	10.000
Norfentanyl	3.464	5050918	707.9	598.8	19301948	10.000
Norhydrocodone	3.046	126260	95.8	63.9	11605336	10.000
norketamine	4.233	1081766	834.6	15309.3	14191097	10.000
Normeperidine	3.771	4124936	1223.3	299.6	12693664	10.000
Noroxycodone	2.999	2170667	384.9	318.7	19280443	10.000
Nortriptyline	4.754	3346309	2002115.1	1129.0	15252822	10.000
O-desmethyl-tramadol	2.990	14355811	32108.7	1146.0	12693664	10.000
O-Desmethylvenlafaxine	3.370	3741698	1022.0	718.8	12693664	10.000
Olanzapine	4.348	3983781	575950.6	574070.2	143617	10.000
Oxazepam	4.720	1486301	446.3	392.7	6449221	10.000
Oxycodone	3.149	5346804	1169.1	1568.0	19280443	10.000
Oxymorphone	2.422	3416880	531.6	190.0	529098	10.000
Paroxetine	4.668	712877	458.4	9770.6	10088821	10.000
Phenazepam	4.835	1653969	1354.5	344434.7	13685484	10.000
Phencyclidine	4.140	7992106	1177.8	263.5	14191097	10.000



AM #25 Multi-Drug Screen Results

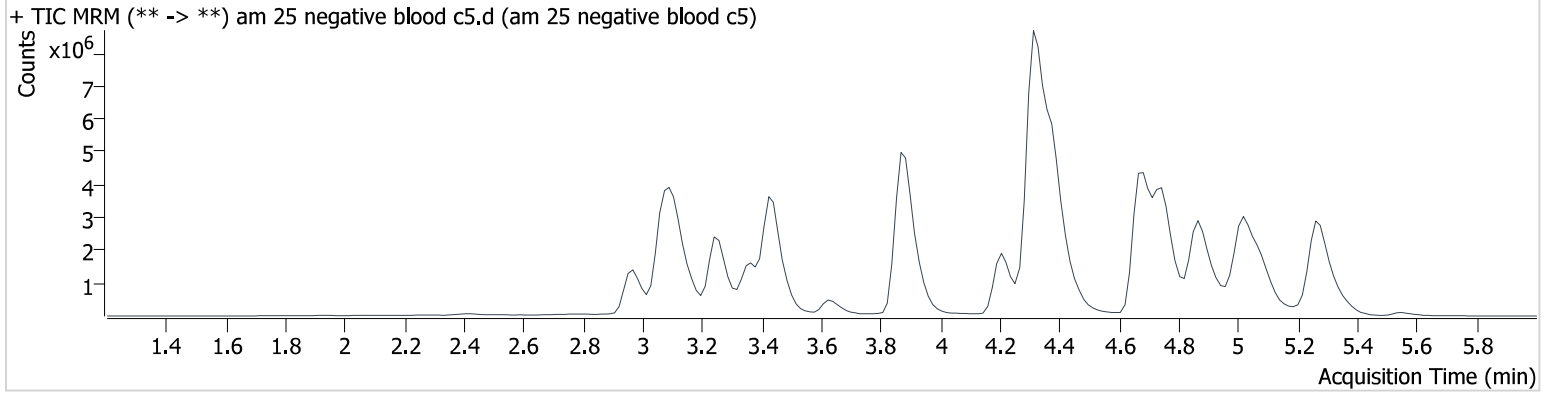
Name	RT	Resp.	S/N	S/N	ISTD Resp.	Calc. Conc.
Phentermine	3.284	2512857	∞	∞	27496642	10.000
Phenytoin	4.262	236334	1442.0	108.3	143617	10.000
primidone	3.542	426113	1876.3	99.1	15252822	10.000
Promethazine	4.950	13556324	43901.2	3984.8	12693664	10.000
Pseudoephedrine	2.795	73600139	18196.8	13171.2	35130593	10.000
Quetiapine	5.094	14385166	3786857.3	3853780. 5	62227297	10.000
Risperidone	4.695	12916593	2073.6	346.0	239463	10.000
Sertraline	5.009	2578663	54145.4	798345.6	10088821	10.000
Sufentanil	5.215	700391	327438.5	1154.2	19301948	10.000
Tapentadol	3.603	8776846	3240.3	4398.6	11605336	10.000
Temazepam	4.872	3236659	1920.9	123.8	13685484	10.000
Topiramate	3.944	67392	14204.2	8349.4	213750	10.000
Tramadol	3.600	12175667	1000.5	105.9	12693664	10.000
Trazodone	5.293	6429576	2460.4	2341.4	26608263	10.000
Venlafaxine	4.028	11186043	83655.3	539.0	10088821	10.000
Zaleplon	4.519	2102634	679239.6	616.7	62227297	10.000
Zolpidem	4.688	17286678	3514122.9	4604.9	62227297	10.000
Zopiclone	4.757	1911017	789037.6	∞	8057288	10.000

AM #25 Multi-Drug Screen Results

Batch results D:\MassHunter\Data\2023\am 25-26\012023\QuantResults\mds.batch.bin
Calibration Last Update 1/25/2023 3:11:54 PM

Instrument	69679	Data File	am 25 negative blood c5.d
Type	Sample	Sample	am 25 negative blood c5
Acq. Method	mds713.m	Operator	Anne Nord
Sample Position	P2-C5	Comment	
Injection Volume	2.5		
Acq. Date-Time	1/20/2023 3:35:56 PM		
Sample Info.			

Sample Chromatogram

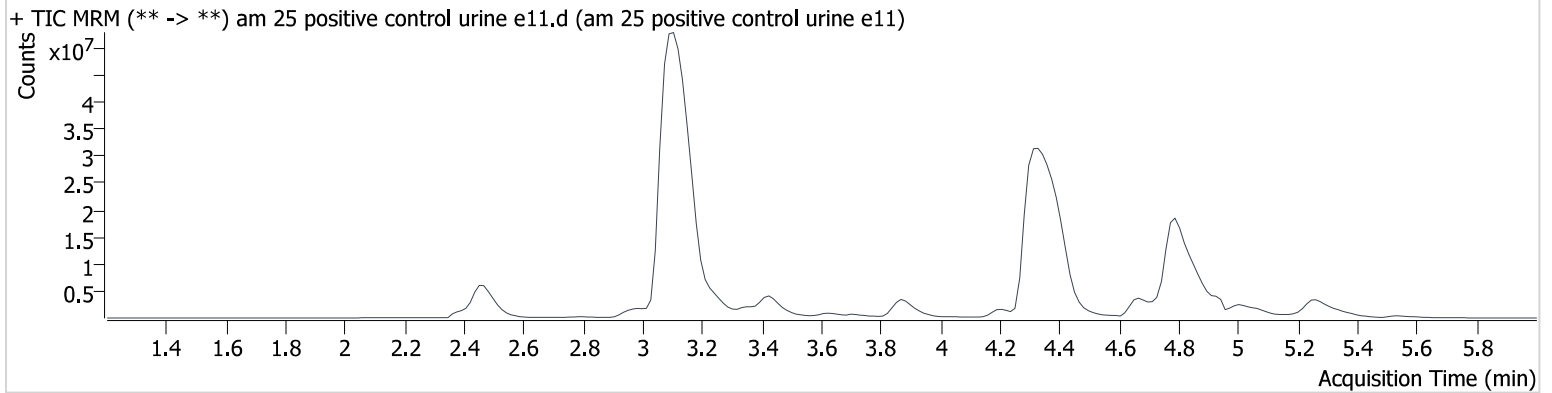


AM #25 Multi-Drug Screen Results

Batch results D:\MassHunter\Data\2023\am 25-26\012023\QuantResults\mds.batch.bin
Calibration Last Update 1/25/2023 3:11:54 PM

Instrument	69679	Data File	am 25 positive control urine e11.d
Type	Sample	Sample	am 25 positive control urine e11
Acq. Method	mds713.m	Operator	Anne Nord
Sample Position	P2-E11	Comment	
Injection Volume	2.5		
Acq. Date-Time	1/20/2023 6:36:56 PM		
Sample Info.			

Sample Chromatogram



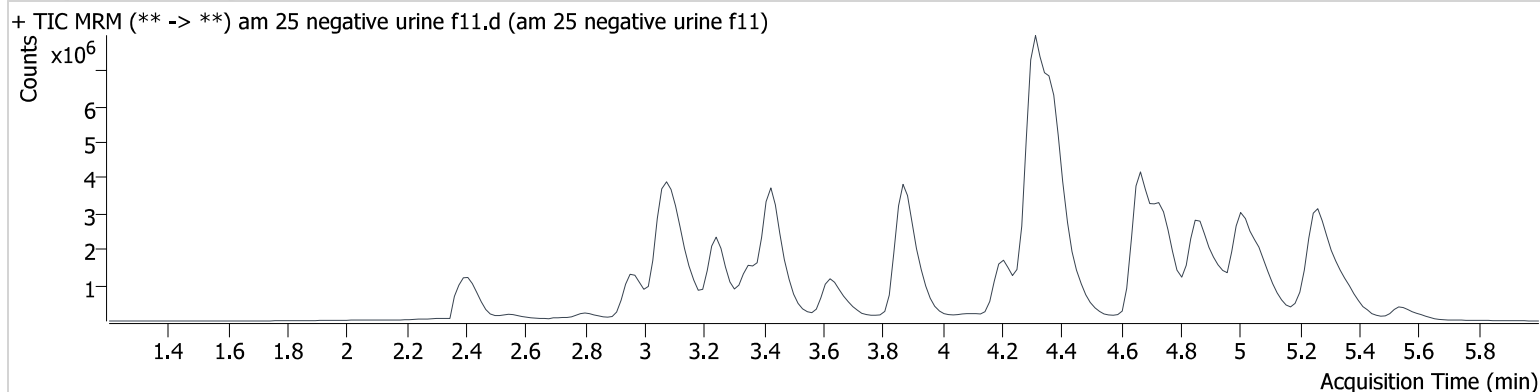
Name	RT	Resp.	S/N	S/N	ISTD Resp.	Calc. Conc.
Alprazolam	4.794	51475687	6476.5	4375.7	1959208	995.155
Diphenhydramine	4.338	132214651	28981.3	5937.8	23879757	298.861
Methamphetamine	3.116	119400908	∞	∞	11699183	294.136
Morphine	2.471	9204386	∞	987.9	134141	533.729

AM #25 Multi-Drug Screen Results

Batch results D:\MassHunter\Data\2023\am 25-26\012023\QuantResults\mds.batch.bin
Calibration Last Update 1/25/2023 3:11:54 PM

Instrument	69679	Data File	am 25 negative urine f11.d
Type	Sample	Sample	am 25 negative urine f11
Acq. Method	mds713.m	Operator	Anne Nord
Sample Position	P2-F11	Comment	
Injection Volume	2.5		
Acq. Date-Time	1/20/2023 6:43:38 PM		
Sample Info.			

Sample Chromatogram



AM# 26: THC and Metabolites Screen in Blood by LC-MS/MS

Extraction Date: 1/20/23 Analyst: Anne Nord

Plate lot#: 220802 Plate retest date: 2/02/23

Mobile phase A: 10mM Ammonium Formate
0.1% Formic Acid in Water

Mobile phase B: 0.1% Formic acid in MeOH
MTBE Hexane

Blank Blood Lot: 22B52016-1 **Urine Blank:** 12522

Column: Agilent Phenyl Hexyl (4.6x50mm: 2.7 um)

LCMS-QQQ ID: 69679

Pre-Analytic:

- 1. Check levels of mobile phases and needle wash refill as needed. Ensure waste is not full.
- 2. Ensure correct column is installed and begin mobile phase flow allow to equilibrate ~ 30 minutes.

Analytic:

- 1. Remove standards, plate, controls, and samples from cold storage. Allow to reach room temperature.
- 2. Urine hydrolysis: add 1.5 ml urine to blank plate, add 250 ul 1N KOH mix and incubate at 40 degrees for 15 minutes.
Pipette **1000 µL blood (calibrated pipette)** in wells of analytical (standards) plate. **Pipette ID: I41142J**
Pipette 1000 ul urine to analytical (standards) plate.
- 3. Place on shaking incubator at ambient temp., 900 rpm for 15 minutes.
- 4. Pipette **500 µL 0.1% formic acid in blood** wells **500 ul saturated phosphate buffer in urine** wells of analytical plate.
- 5. Place on shaking incubator at ambient temp., 900 rpm for 15 minutes.
- 6. Transfer **800 µL of blood acid or urine acid** mixture to corresponding wells of SLE+ plate.
- 7. Apply positive pressure for approx. 10-15 seconds (or until no liquid remains on top of sorbent).
(Load at 85-100 PSI- Selector to the right) Manifold ID: 66792
- 8. Wait 5 minutes.
- 9. Add **2.25 mL MTBE** (add in 3 increments of 750 µL).
- 10. Wait 5 minutes.
- 11. Apply positive pressure for approx. 10-15 seconds. **(12-15 PSI- Selector to the left)**.
- 12. Add **2.25 mL hexane** (add in 3 increments of 750 µL).
- 13. Wait 5 minutes.
- 14. Apply positive pressure for approx. 10-15 seconds. **(12-15 PSI- Selector to the left)**.
- 15. Remove plate containing eluate. Place on SPE Dry and evaporate to dryness at approx. 35°C.
SPE Dry ID: 66819
- 16. Reconstitute in **100 µL 100% LCMS MeOH** and heat seal plate with foil. Place in autosampler and run worklist.

Post-Analytic

- 1. Create batch and process data.
- 2. Calculated sample concentration of 3 ng/mL or greater for THC and THC-OH, a calculated sample concentration of 10 ng/mL or greater for Carboxy-THC.
- 3. Retention time within +/- 2% or +/-0.100 min whichever is greater of the average retention time of the calibrators.
- 4. Did all QCs pass for each analyte? Yes
- 5. Central File Packet to include: LIMS Worklist, Method Checklist, Calibration and Control Reports

COMMENTS:

	1	2	3	4	5	6
a	cal 1	Internal control urine	2776-4	2847-1	c2023-0108-1	SIE and injection plate 2792-1
b	cal 2	negative blood	2780-1	2900-1	c2023-0116-1	
c	cal 3	2701-1	mixing plate 2792-1	2908-1	Mixing plate c2023-0118-1	SLE and injection plate c2023-0118-1
d	cal 4	2701-2	2814-1	c2023-0011-1	c2023-0130-1	
e	Cal 5	Mixing plate 2708-1	2816-2	c2023-0046-1	negative urine	
f	cal 6	2710-1	2817-1	c2023-0058-1	2903-1	
g	cal 7	2729-1	2818-1	c2023-0063-1	c2023-0099-1	
h	Internal control (blood)	2773-1	2842-1	c2023-0089-1	SLE and injection plate 2708-1	

Plate position 3

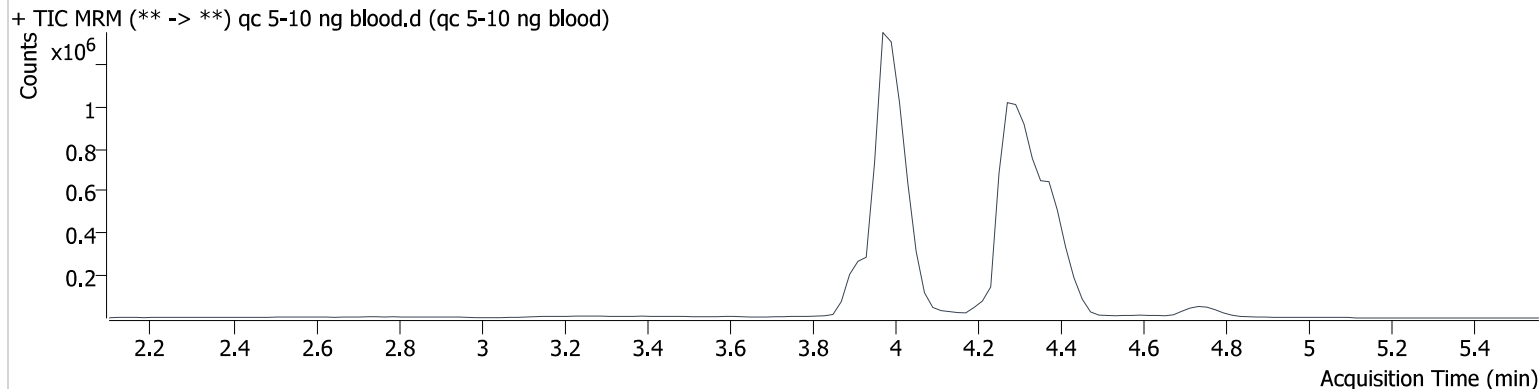
c2022-__-__

AM #26 Cannabinoids Screen Results

Batch results D:\MassHunter\Data\2023\am 25-26\012023\QuantResults\cann.batch.bin
Calibration Last Update 1/25/2023 3:14:10 PM

Instrument	69679	Data File	qc 5-10 ng blood.d
Type	QC	Sample	qc 5-10 ng blood
Acq. Method	am 26 cann scr 5-5-20.m	Operator	Anne Nord
Sample Position	P3-H1	Comment	
Injection Volume	5		
Acq. Date-Time	1/20/2023 8:29:52 PM		
Sample Info.			

Sample Chromatogram



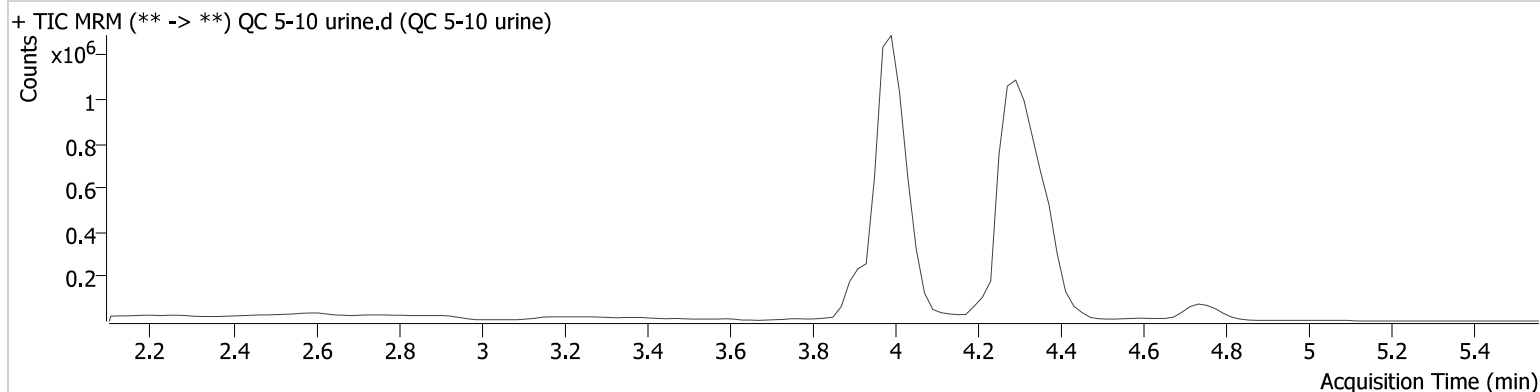
Name	RT	Resp.	ISTD Resp.	Final Conc.
THC	4.405	71055	1625416	4.880 ng/ml
THC-COOH	3.912	160791	896407	14.779 ng/ml
THC-OH	3.999	51639	5819491	4.632 ng/ml

AM #26 Cannabinoids Screen Results

Batch results D:\MassHunter\Data\2023\am 25-26\012023\QuantResults\cann.batch.bin
Calibration Last Update 1/25/2023 3:14:10 PM

Instrument	69679	Data File	QC 5-10 urine.d
Type	Sample	Sample	QC 5-10 urine
Acq. Method	am 26 cann scr 5-5-20.m	Operator	Anne Nord
Sample Position	P3-A2	Comment	
Injection Volume	5		
Acq. Date-Time	1/20/2023 8:36:20 PM		
Sample Info.			

Sample Chromatogram



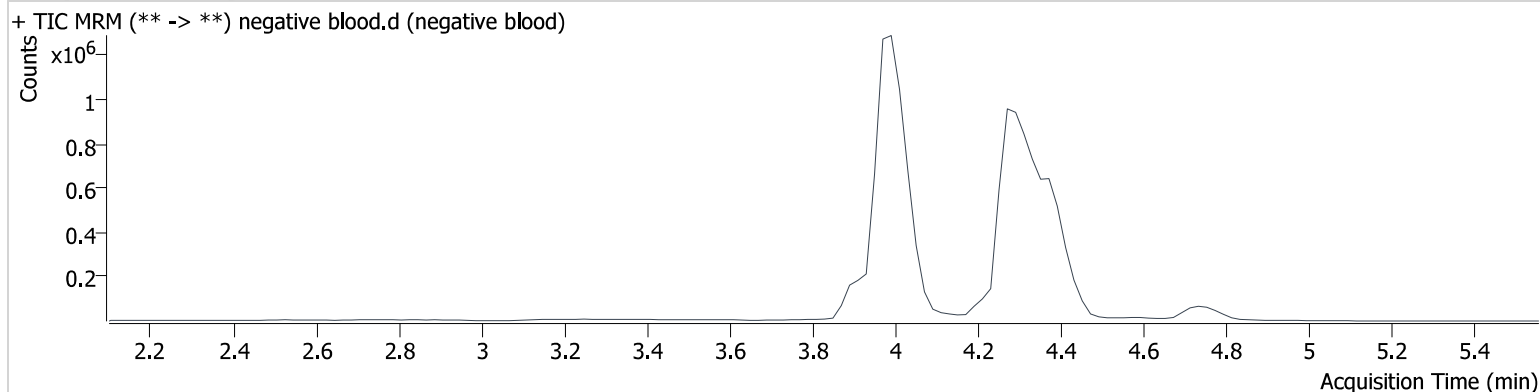
Name	RT	Resp.	ISTD Resp.	Final Conc.
THC	4.385	29405	700380	4.695 ng/ml
THC-COOH	3.932	155213	787159	16.209 ng/ml
THC-OH	3.999	49940	5646584	4.617 ng/ml

AM #26 Cannabinoids Screen Results

Batch results D:\MassHunter\Data\2023\am 25-26\012023\QuantResults\cann.batch.bin
Calibration Last Update 1/25/2023 3:14:10 PM

Instrument	69679	Data File	negative blood.d
Type	Sample	Sample	negative blood
Acq. Method	am 26 cann scr 5-5-20.m	Operator	Anne Nord
Sample Position	P3-B2	Comment	
Injection Volume	5		
Acq. Date-Time	1/20/2023 8:42:48 PM		
Sample Info.			

Sample Chromatogram

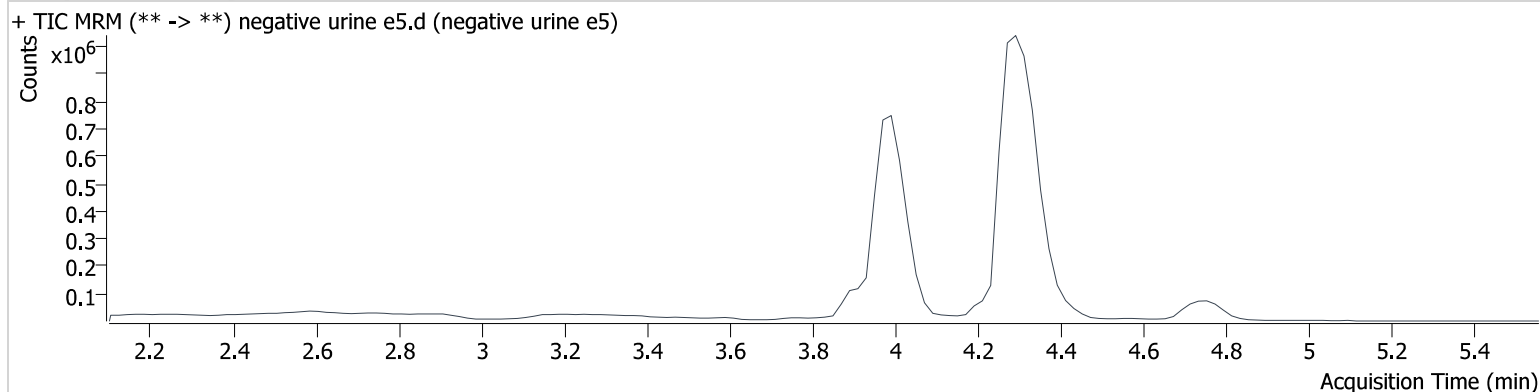


AM #26 Cannabinoids Screen Results

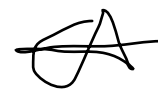
Batch results D:\MassHunter\Data\2023\am 25-26\012023\QuantResults\cann.batch.bin
Calibration Last Update 1/25/2023 3:14:10 PM

Instrument	69679	Data File	negative urine e5.d
Type	Sample	Sample	negative urine e5
Acq. Method	am 26 cann scr 5-5-20.m	Operator	Anne Nord
Sample Position	P3-E5	Comment	
Injection Volume	5		
Acq. Date-Time	1/20/2023 11:37:35 PM		
Sample Info.			

Sample Chromatogram



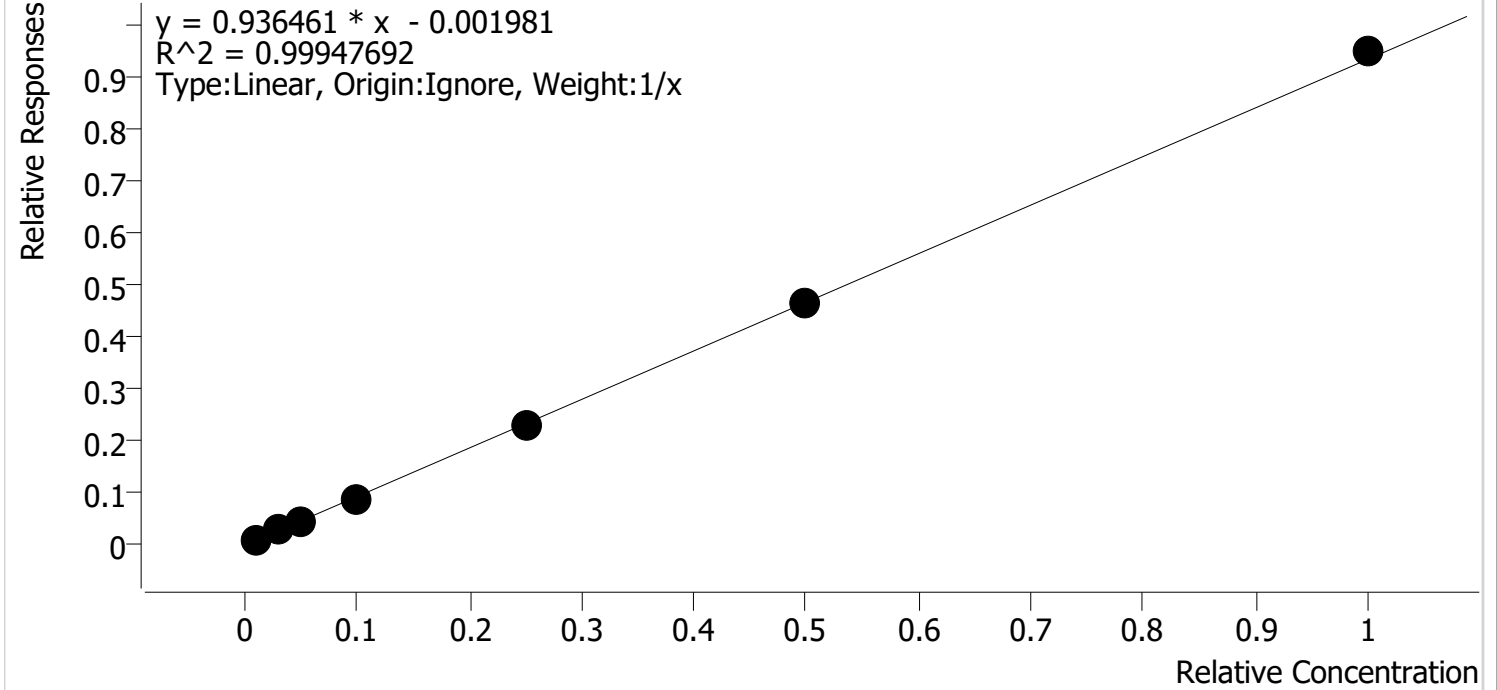
Compound Calibration Report



Batch results D:\MassHunter\Data\2023\am 25-26\012023\QuantResults\cann.batch.bin
Last Cal. Update 1/25/2023 3:14 PM
Analyst Name ISP\datastor
Analyte THC

Internal Standard THC-d3

THC - 7 Levels, 7 Levels Used, 7 Points, 7 Points Used, 0 QCs



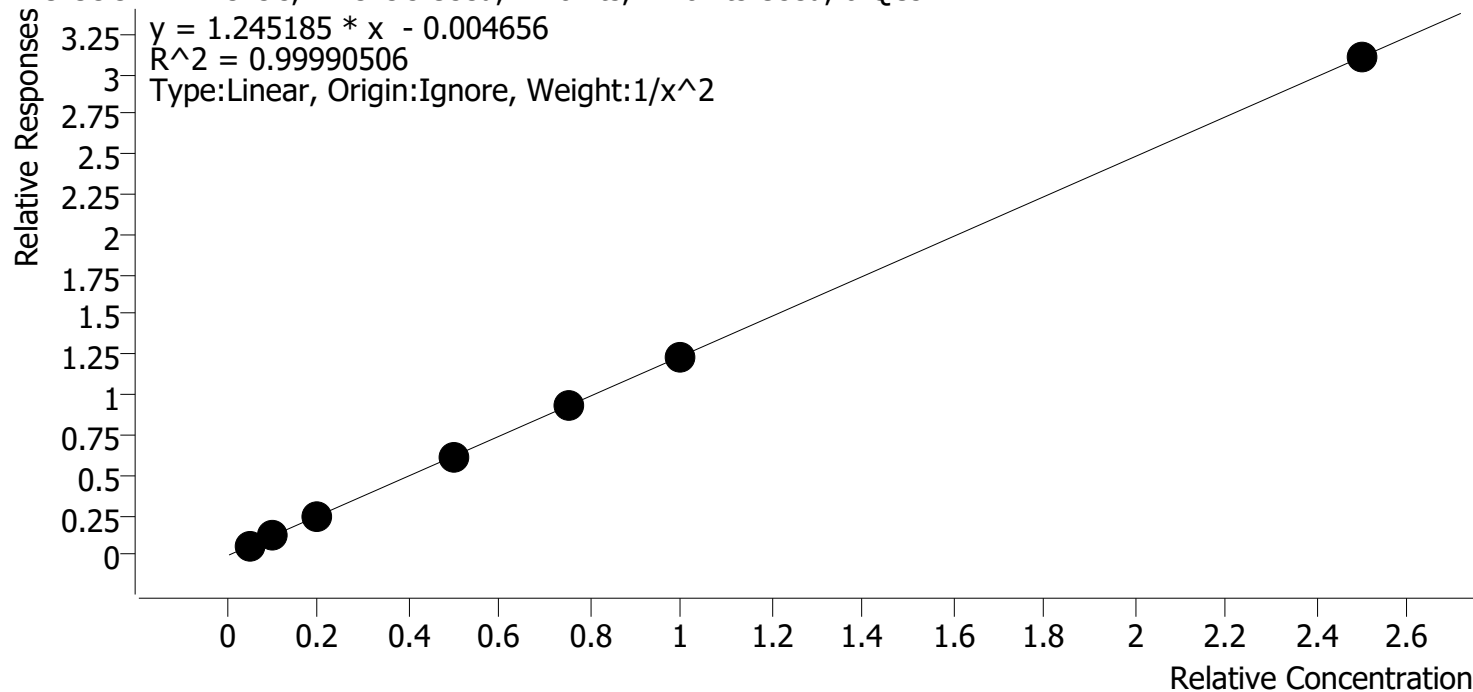
Sample	Level	Enabled	Expected Concentration	Final Concentration	Accuracy
cal 1	1	✓	1.0	1.1	112.3
cal 2	2	✓	3.0	3.0	99.0
cal 3	3	✓	5.0	4.7	93.8
cal 4	4	✓	10.0	9.6	96.3
cal 5	5	✓	25.0	24.5	98.0
cal-6	6	✓	50.0	49.5	99.1
cal-7	7	✓	100.0	101.6	101.6

Compound Calibration Report



Batch results D:\MassHunter\Data\2023\am 25-26\012023\QuantResults\cann.batch.bin
Last Cal. Update 1/25/2023 3:14 PM
Analyst Name ISP\datastor
Analyte THC-COOH **Internal Standard** THC-COOH-d9

THC-COOH - 7 Levels, 7 Levels Used, 7 Points, 7 Points Used, 0 QCs



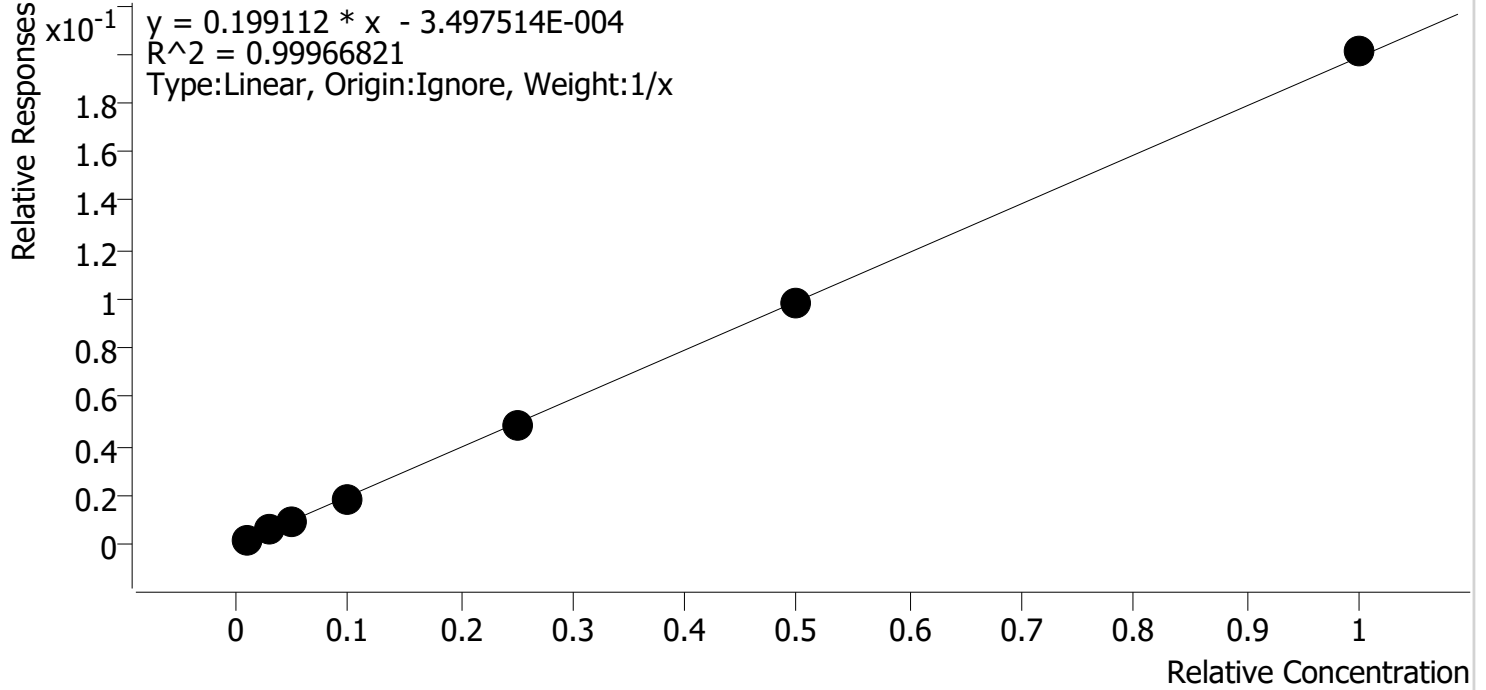
Sample	Level	Enabled	Expected Concentration	Final Concentration	Accuracy
cal 1	1	✓	5.0	5.0	100.5
cal 2	2	✓	10.0	9.9	99.3
cal 3	3	✓	20.0	19.8	99.1
cal 4	4	✓	50.0	50.1	100.1
cal 5	5	✓	75.0	76.1	101.5
cal-6	6	✓	100.0	99.6	99.6
cal-7	7	✓	250.0	249.6	99.8

Compound Calibration Report



Batch results D:\MassHunter\Data\2023\am 25-26\012023\QuantResults\cann.batch.bin
Last Cal. Update 1/25/2023 3:14 PM
Analyst Name ISP\datastor
Analyte THC-OH **Internal Standard** THC-OH-d3

THC-OH - 7 Levels, 7 Levels Used, 7 Points, 7 Points Used, 0 QCs



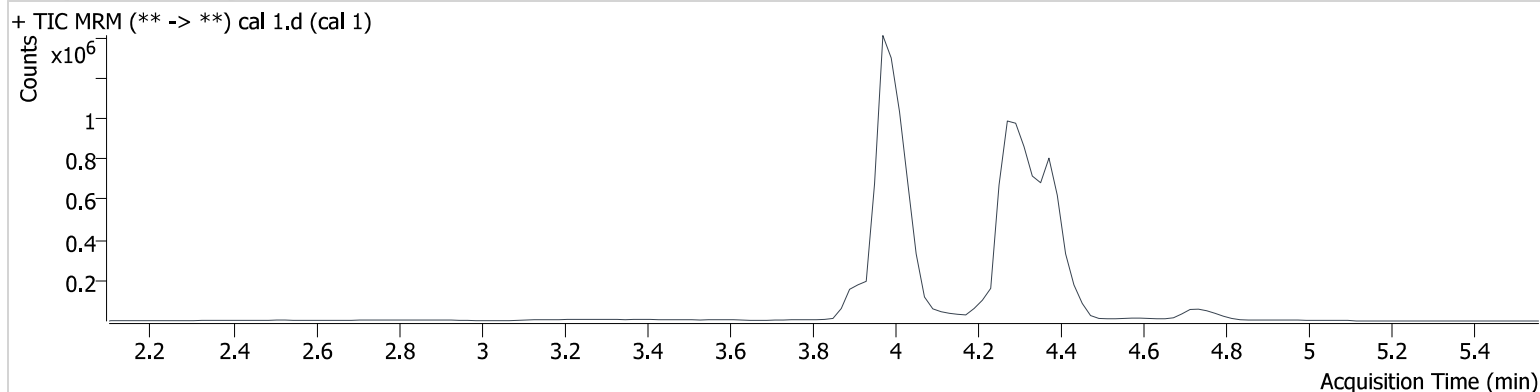
Sample	Level	Enabled	Expected Concentration	Final Concentration	Accuracy
cal 1	1	✓	1.0	1.1	110.6
cal 2	2	✓	3.0	2.9	97.7
cal 3	3	✓	5.0	4.8	96.6
cal 4	4	✓	10.0	9.6	96.0
cal 5	5	✓	25.0	24.6	98.3
cal-6	6	✓	50.0	49.8	99.7
cal-7	7	✓	100.0	101.1	101.1

AM #26 Cannabinoids Screen Results

Batch results D:\MassHunter\Data\2023\am 25-26\012023\QuantResults\cann.batch.bin
Calibration Last Update 1/25/2023 3:14:10 PM

Instrument	69679	Data File	cal 1.d
Type	Cal	Sample	cal 1
Acq. Method	am 26 cann scr 5-5-20.m	Operator	Anne Nord
Sample Position	P3-A1	Comment	
Injection Volume	5		
Acq. Date-Time	1/20/2023 7:44:26 PM		
Sample Info.			

Sample Chromatogram



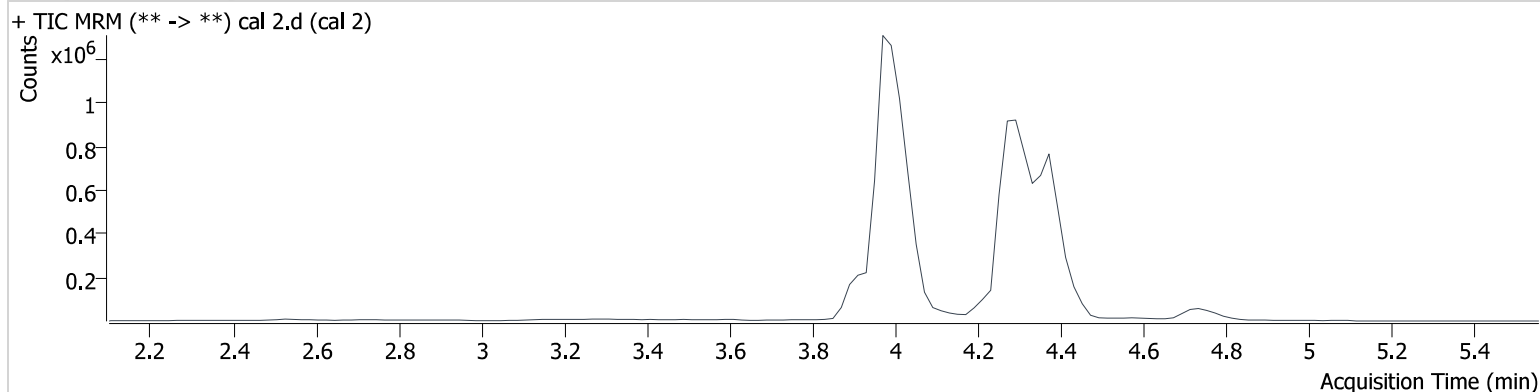
Name	RT	Resp.	ISTD Resp.	Final Conc.
THC	4.385	18377	2154024	1.123 ng/ml Low
THC-COOH	3.912	43631	753626	5.023 ng/ml Low
THC-OH	3.999	12003	6479493	1.106 ng/ml Low

AM #26 Cannabinoids Screen Results

Batch results D:\MassHunter\Data\2023\am 25-26\012023\QuantResults\cann.batch.bin
Calibration Last Update 1/25/2023 3:14:10 PM

Instrument	69679	Data File	cal 2.d
Type	Cal	Sample	cal 2
Acq. Method	am 26 cann scr 5-5-20.m	Operator	Anne Nord
Sample Position	P3-B1	Comment	
Injection Volume	5		
Acq. Date-Time	1/20/2023 7:51:04 PM		
Sample Info.			

Sample Chromatogram



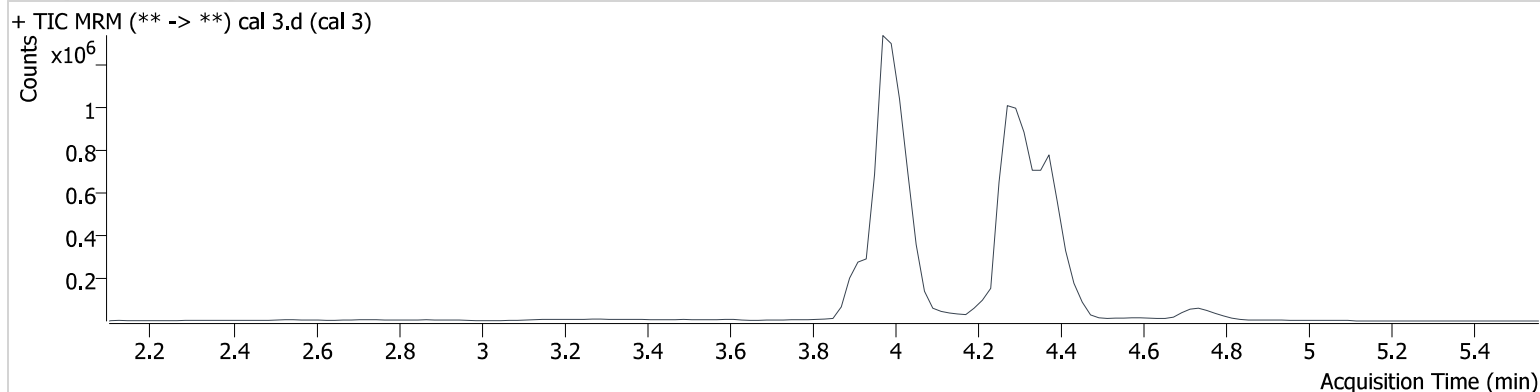
Name	RT	Resp.	ISTD Resp.	Final Conc.
THC	4.385	53702	2079423	2.969 ng/ml Low
THC-COOH	3.912	92887	780447	9.932 ng/ml Low
THC-OH	3.999	33198	6050857	2.931 ng/ml Low

AM #26 Cannabinoids Screen Results

Batch results D:\MassHunter\Data\2023\am 25-26\012023\QuantResults\cann.batch.bin
Calibration Last Update 1/25/2023 3:14:10 PM

Instrument	69679	Data File	cal 3.d
Type	Cal	Sample	cal 3
Acq. Method	am 26 cann scr 5-5-20.m	Operator	Anne Nord
Sample Position	P3-C1	Comment	
Injection Volume	5		
Acq. Date-Time	1/20/2023 7:57:32 PM		
Sample Info.			

Sample Chromatogram



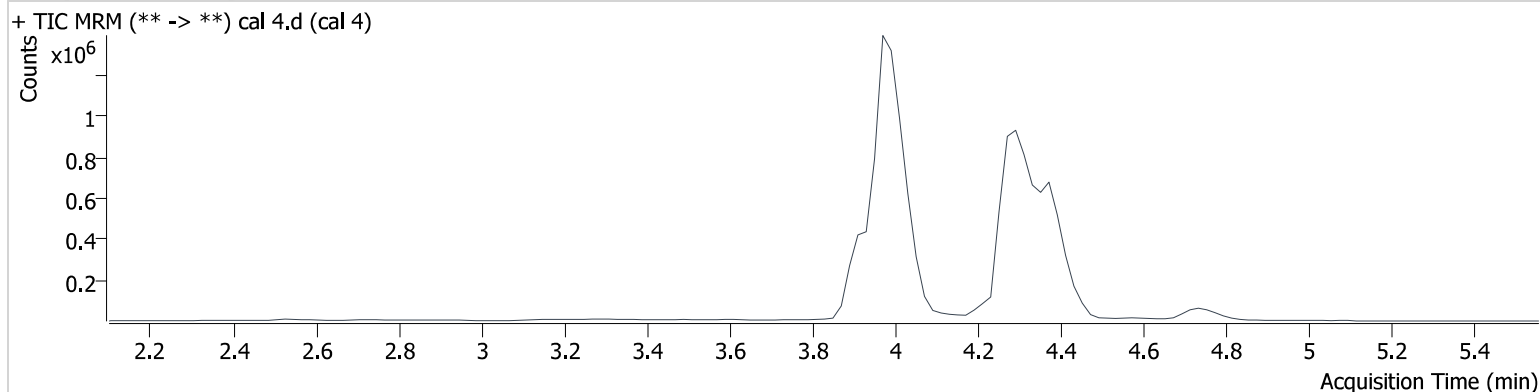
Name	RT	Resp.	ISTD Resp.	Final Conc.
THC	4.385	84475	2013237	4.692 ng/ml
THC-COOH	3.912	203437	840095	19.822 ng/ml
THC-OH	3.999	54919	5927928	4.829 ng/ml

AM #26 Cannabinoids Screen Results

Batch results D:\MassHunter\Data\2023\am 25-26\012023\QuantResults\cann.batch.bin
Calibration Last Update 1/25/2023 3:14:10 PM

Instrument	69679	Data File	cal 4.d
Type	Cal	Sample	cal 4
Acq. Method	am 26 cann scr 5-5-20.m	Operator	Anne Nord
Sample Position	P3-D1	Comment	
Injection Volume	5		
Acq. Date-Time	1/20/2023 8:04:00 PM		
Sample Info.			

Sample Chromatogram



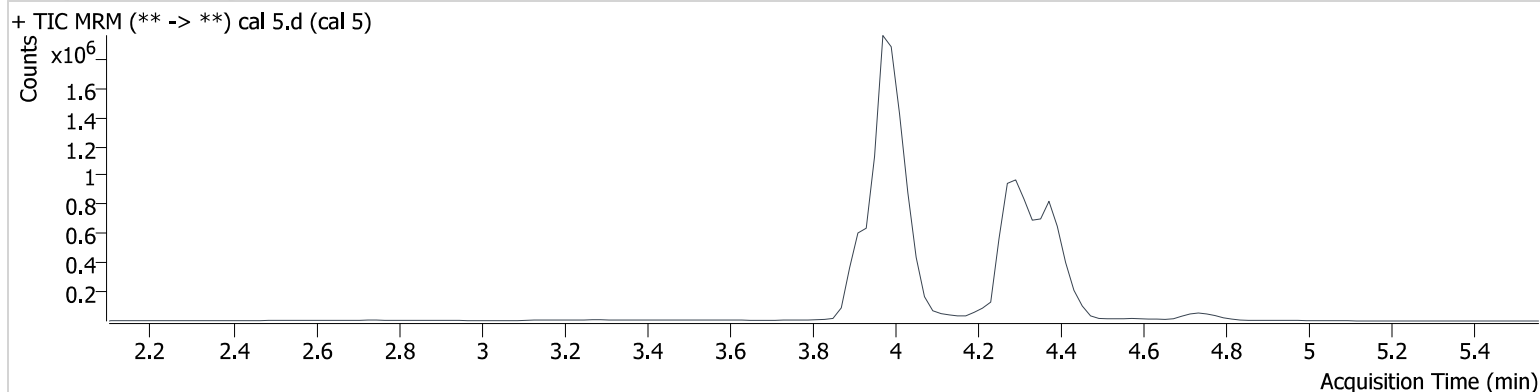
Name	RT	Resp.	ISTD Resp.	Final Conc.
THC	4.385	153838	1743608	9.633 ng/ml
THC-COOH	3.912	492580	795954	50.074 ng/ml
THC-OH	3.999	97690	5203668	9.604 ng/ml

AM #26 Cannabinoids Screen Results

Batch results D:\MassHunter\Data\2023\am 25-26\012023\QuantResults\cann.batch.bin
Calibration Last Update 1/25/2023 3:14:10 PM

Instrument	69679	Data File	cal 5.d
Type	Cal	Sample	cal 5
Acq. Method	am 26 cann scr 5-5-20.m	Operator	Anne Nord
Sample Position	P3-E1	Comment	
Injection Volume	5		
Acq. Date-Time	1/20/2023 8:10:28 PM		
Sample Info.			

Sample Chromatogram



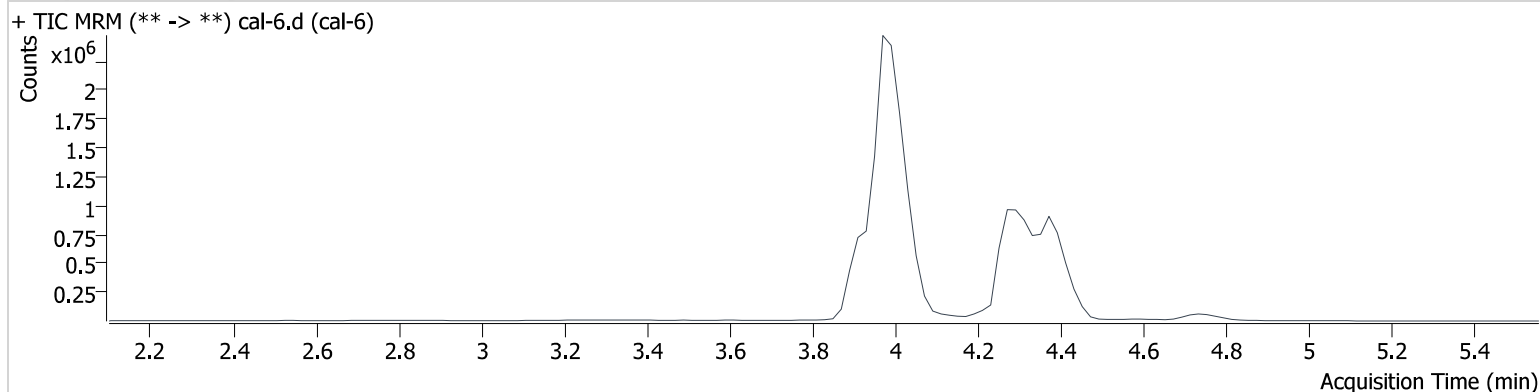
Name	RT	Resp.	ISTD Resp.	Final Conc.
THC	4.385	439425	1932875	24.488 ng/ml
THC-COOH	3.912	830759	880960	76.107 ng/ml
THC-OH	3.999	293323	6038044	24.574 ng/ml

AM #26 Cannabinoids Screen Results

Batch results D:\MassHunter\Data\2023\am 25-26\012023\QuantResults\cann.batch.bin
Calibration Last Update 1/25/2023 3:14:10 PM

Instrument	69679	Data File	cal-6.d
Type	Cal	Sample	cal-6
Acq. Method	am 26 cann scr 5-5-20.m	Operator	Anne Nord
Sample Position	P3-F1	Comment	
Injection Volume	5		
Acq. Date-Time	1/20/2023 8:16:56 PM		

Sample Chromatogram



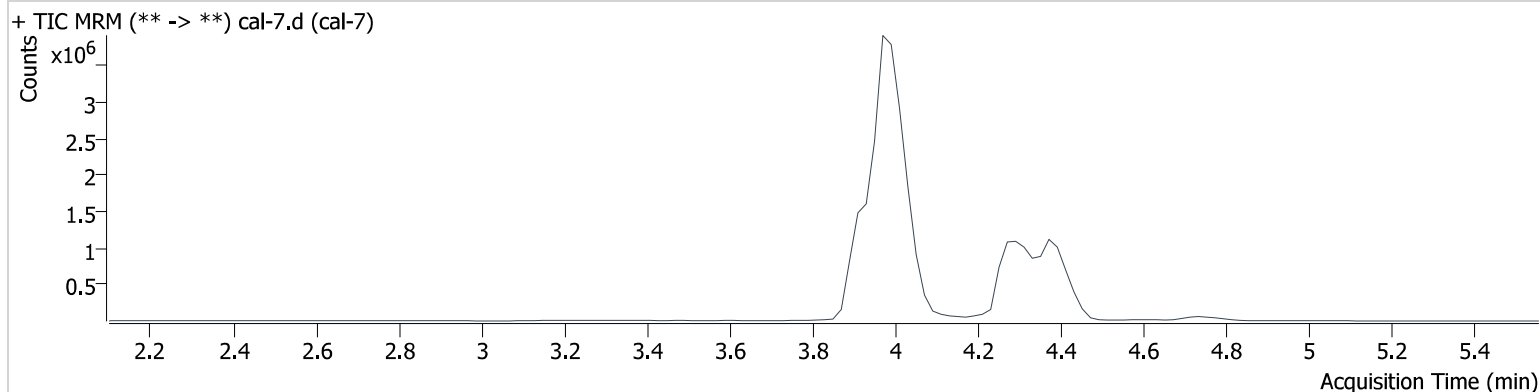
Name	RT	Resp.	ISTD Resp.	Final Conc.
THC	4.385	851813	1843887	49.543 ng/ml
THC-COOH	3.932	1087490	879749	99.647 ng/ml
THC-OH	3.999	587362	5940608	49.832 ng/ml

AM #26 Cannabinoids Screen Results

Batch results D:\MassHunter\Data\2023\am 25-26\012023\QuantResults\cann.batch.bin
Calibration Last Update 1/25/2023 3:14:10 PM

Instrument	69679	Data File	cal-7.d
Type	Cal	Sample	cal-7
Acq. Method	am 26 cann scr 5-5-20.m	Operator	Anne Nord
Sample Position	P3-G1	Comment	
Injection Volume	5		
Acq. Date-Time	1/20/2023 8:23:24 PM		
Sample Info.			

Sample Chromatogram



Name	RT	Resp.	ISTD Resp.	Final Conc.
THC	4.405	1584877	1670028	101.552 ng/ml
THC-COOH	3.932	2708733	872946	249.572 ng/ml
THC-OH	3.999	1256301	6250236	101.124 ng/ml